

# **FormDirect**<sup>TM</sup>

*In, on & around concrete*



**CONCRETE SHORING SYSTEM**

a quality product of:



**SYMONS**<sup>®</sup>  
By Dayton Superior

**Big expertise. Real convenience. Concrete commitment.**





## THE PRO-SHORE SYSTEM'S VERSATILITY AND EFFICIENCY IS DESIGNED AROUND CONTRACTORS' NEEDS.



During development of our system, leading contractors expressed their forming needs and the need for improving labor productivity. Information gathered during this process was vital in designing a simple system that can handle all phases of the contractors' forming needs in a cost effective manner. The Pro-Shore decking system is the most cost-effective solution in today's marketplace.

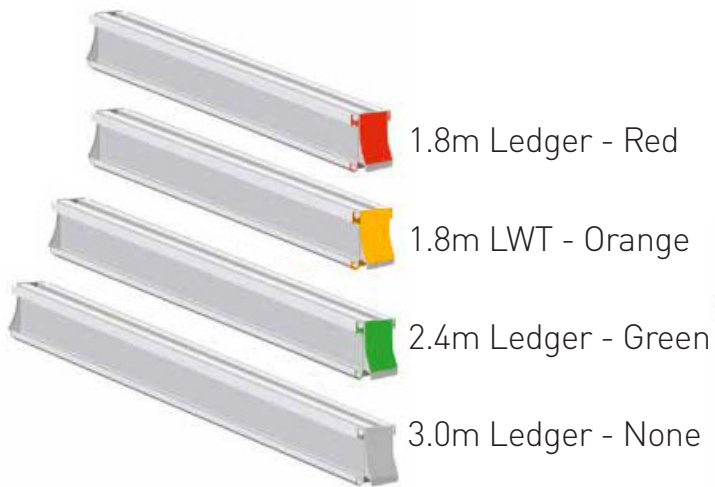


## COMPONENTS

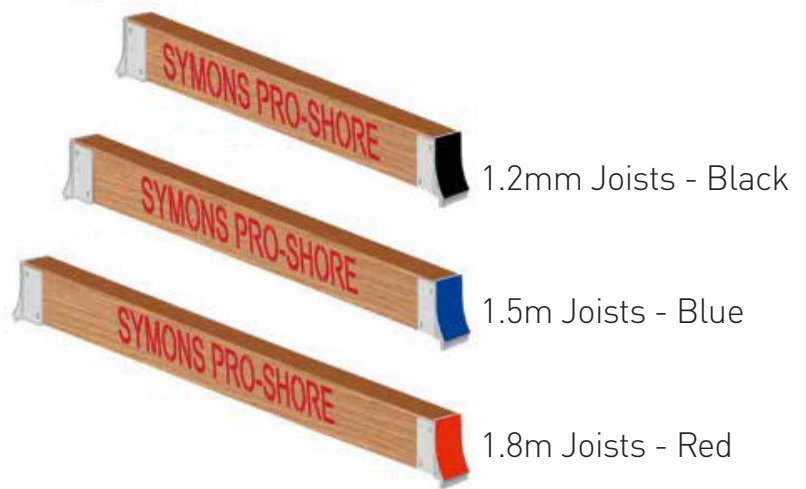
### COMPONENT SUMMARY

Pro-Shore's modular deck system uses color coding for easy identification during assembly and stripping.

#### Ledger Color Codes

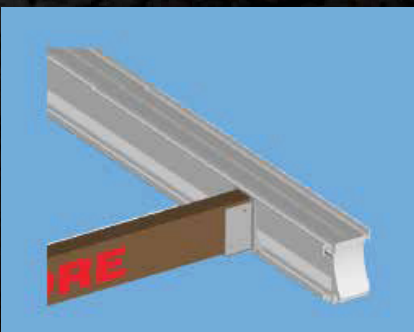


#### Joist Color Codes

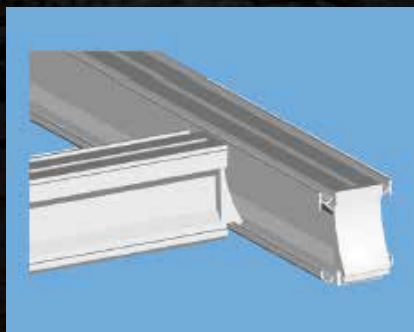


## EASE OF USE

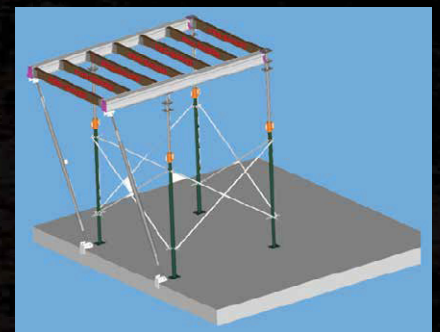
Our lightweight components are designed with ease of use in mind.



108m Joist - Ledger Connection



Ledger - Ledger Connection



Posts can be X-braced with standard steel cross-braces for stability and stand-alone towers with cantilevers utilizing diagonal safety struts.

## POST HEIGHT & WEIGHT CAPACITIES



Single posts allow clean unbraced areas for material movement and easy access.



Symons Frame First can be utilized in unique high-bay applications.



5,000 to 6,000 SF of equipment can be loaded on a 40' flatbed, results in lower freight costs.



- Post heights range from 2m to 6.4m
- Post heights range from 2m to 6.4m
- System can support concrete slabs up to 450mm thick



## WEIGHT & PACKAGING SPECIFICATIONS

Pro-Shore ships all equipment in storage carts which can be moved throughout the jobsite without the use of a crane.

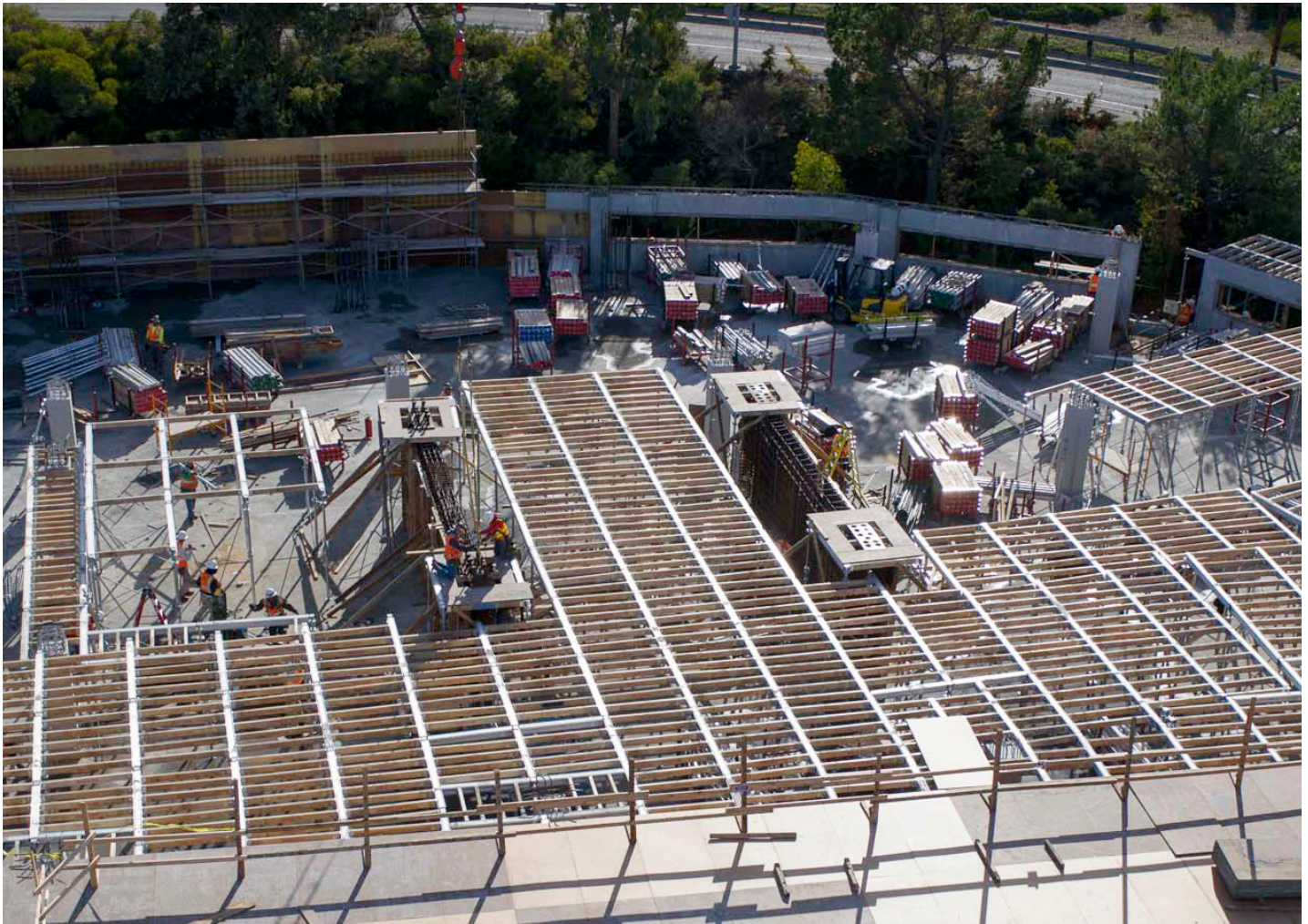
DESCRIPTIONS	QUANTITY PER PACK	WEIGHT	WEIGHT PER PACK
Dayton Prime Post	50	33 kg	1697 kg
Dayton Prime Post w/ Extention	50	40 kg	2034 kg
# 3 Pro-Shore Post	50	26 kg	1353 kg
#2 Pro-Shore Post	50	23 kg	1134 kg
PS Steel Post	50	38 kg	1943 kg
3m Ledgers	33	31 kg	1049 kg
2.4m Ledgers	33	25 kg	846 kg
1.8m Ledgers	33	19 kg	652 kg
1.2m Ledgers	68	7 kg	485 kg
1.5m LVL Joist	68	7 kg	516 kg



## PRO-SHORE ADVANTAGES

1. 2.0m to 6.4m single post capability.
2. Round wedged “Dropheads” allow ledgers and joists to be stripped while leaving undisturbed reshores in place. 70% Material recovery 1 day after pouring possible - only vertical posts stay in place as reshores.
3. Slabs with slopes up to 15% can be shored and safely braced to resist lateral loads.
4. 2.4m x 1.8m post grid (4.46 sq. m.) requires 25% fewer posts than European 2000mm x 2000mm (approx. 3.34 sq. m.) post grids.
5. Up to 450mm slabs can be supported with standard equipment to meet DOT specifications.
6. Fully braced cantilevers allow 1.2m walkways beyond slab edge.
7. All parts are color coded to match Dayton Superior provided erection drawings.
8. 465 to 557 sq. m. of equipment can be loaded on a standard flatbed. Lower freight costs.
9. All posts have attached Jet-Loks so standard steel cross braces can be utilized to stabilize the posts into 4-legged towers for safety during erection of our system — No tripods or wood bracing required.
10. Field service technicians available to assist in initial erection and stripping of equipment.
11. “Field Friendly” detailed delivery list with line item inventory, part description and color photographs.
12. Standard components can be integrated with frames to construct high bay conditions eliminating the need to employ an additional forming system.







# **FormDirect**<sup>TM</sup>

*In, on & around concrete*

## **QUEENSLAND**

**T** 07 4152 8788

**F** 07 4152 8700

**E** [sales@formdirect.com.au](mailto:sales@formdirect.com.au)

**W** [www.formdirect.com.au](http://www.formdirect.com.au)

56 Enterprise Street

Svensson Heights QLD 4670

## **VICTORIA**

**T** 03 5127 2757

**F** 03 5127 2727

**E** [salesvic@formdirect.com.au](mailto:salesvic@formdirect.com.au)

**W** [www.formdirect.com.au](http://www.formdirect.com.au)

12 Della Torre Rd

Moe VIC 3825

☎ **1300 659 830**

🖱 [www.formdirect.com.au](http://www.formdirect.com.au)

Partnering with

**ReliableHire**

*Equipment you can rely on*

**Big expertise. Real convenience. Concrete commitment.**