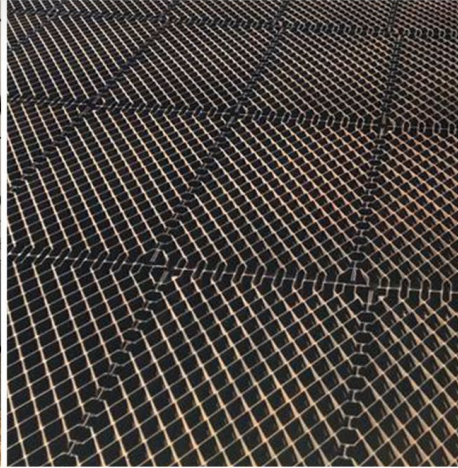


Diamond Grid™ for

# Mining & CIVIL



**Hardstands**  
**Workshops**  
**Access Roads**  
**Haul Roads**  
**Camps &**  
**Office Blocks**

## Concrete Pavements:

Eliminate operational downtime.

Save up to 75% on installation costs compared to traditional concrete pavement.

Drastically reduced curing time, drive on 24 hrs after concrete pour.



Load capacity up to 7000+ tonnes per m<sup>2</sup>

Reduce ongoing maintenance requirements with graders, rollers, and water trucks.

Limited disruption to daily operations.



DIAMOND GRID™



**Mining  
& Civil**



**DIAMOND GRID™**

## Contents.

Introduction	3
Features & Applications + Customer installations	4
Cost Comparison Diamond Grid™ vs Traditional Concrete + Customer installations	5
Diamond Grid™ Specifications	6
Diamond Grid™ Technical Benefits	6
Diamond Grid™ Across The World Manufacturers and Distributors	7
Diamond Grid™ Partners	7
Customer Testimonials	8
Videos & Case studies	9



**Diamond Grid™ Concrete Pavement  
Installation for a Warehouse, Laydown  
Area, and Hardstands,  
Belyando Central QLD.**



## Mining & Civil

“ For more than **15 years**,  
Diamond Grid™ has been a  
leader internationally, serving  
in **27 countries** and providing  
the strongest innovative  
erosion and stabilisation  
control applications for  
Mining & Civil.



## Concrete Pavements



## Hardstands



## Workshops & Shed Floors



## Access Roads



## Haul Roads



## Camps & Office Blocks



DIAMOND GRID™



Diamond Grid™ is a lightweight 100% recycled grid system that is strong and durable. Its diamond pattern and polypropylene material provide excellent strength and load-bearing capacity.



**Mining  
& Civil**

# Features & Applications.

- Hardstands**
- Workshops**
- Access Roads**
- Haul Roads**
- Camps & Office Blocks**

## Features & Benefits

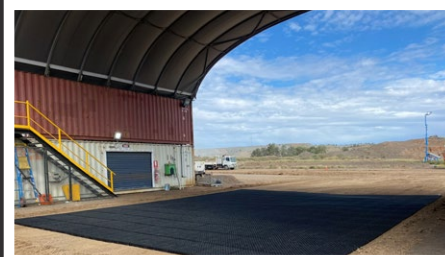
- Up to 75% less installation costs
- Eliminate operational downtime
- Lower maintenance costs
- Up to 91% less concrete
- Up to 96% Permeability
- Load capacity 7000+ tonnes per m<sup>2</sup>
- Made From 100% recycled plastic
- UV stabilised for harsh conditions
- Reduce your carbon footprint
- Reduce subgrade thickness
- Increase load bearing capacity
- Reduce maintenance frequency by 70%
- Reduce maintenance costs by more than 75%
- Holds the surface together for much greater periods than traditional surfaces
- Increase traffic load without increasing pavement thickness
- Minimises failure due to semi-rigid load bearing capacity
- Increase fuel economy of vehicles as they can travel 50-75% faster one safe level and solid roads
- Elimination of 90% safety issues and vehicles accidents as with Diamond Grid™, roads & surfaces are free of potholes & corrugation



**adani** BELYANDO CENTRAL QLD  
Warehouse & Laydown Area + Hardstands



**RioTinto** BOYNE SMELTER  
Laydown Area + Hardstands



**BMA** BLACKWATER  
Satellite Workshop for Heavy Vehicles



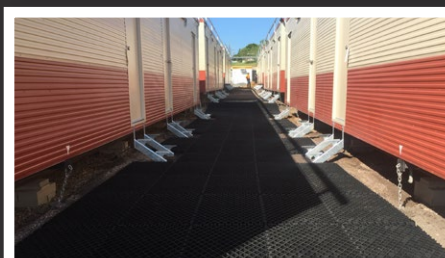
**Coronado** CURRAGH MINE  
Concrete Pavements around the fixed plant



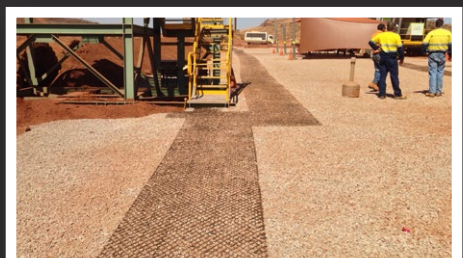
**THIESS** MT ISA - ANTHILL MINE  
Heavy Vehicle Workshop Slab



**GLENCORE** MANGOOLA COAL  
Water Truck Fill Point & all weather Access Roads



**QGC** CHINCHILLA QLD  
Workers Camps Pathways



**BHP** NEWMAN  
Camps & Offices

- ✓ Eliminate operational downtime
- ✓ Fast install with secure interlocking system
- ✓ Save up to 76% on installation costs compared to traditional concrete pavement
- ✓ Load capacity up to 7000+ tonnes per m<sup>2</sup>
- ✓ Reduce ongoing maintenance with graders, rollers and water trucks
- ✓ Limited disruption to daily operations



**BUILT TOUGH**





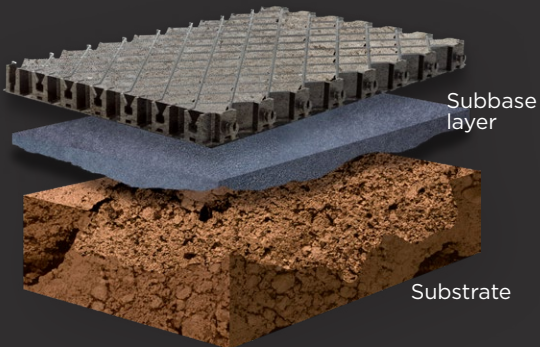
**Mining  
& Civil**

# Cost Comparison.

## Traditional Concrete vs Diamond Grid™



**DIAMOND GRID™**  
Diamond Grid™ with 40mm concrete fill



**Cost Estimates**

Project Time

Slab Thickness

Curing time

Recycled Plastic Used

**Savings\***

Up To:

**77%**

**90%**

**96%**

**100%**

**Total Project Savings**

**76%**

\* Calculations as compared to a 400mm traditional concrete slab



**GLENCORE** COLLINSVILLE COAL  
Warehouse & Hardstands



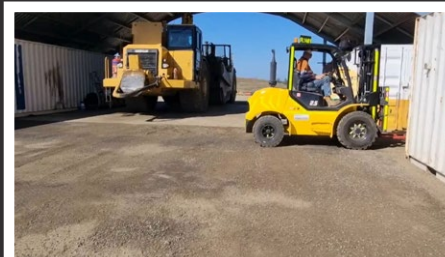
**RioTinto** PILBARA  
Access Road and Rail Loading Facility



**Wollongong Resources** RUSSELL VALE COLLIERY  
Underground Decline



**FMG** CLOUDBREAK MINE WA  
Airport Terminal All Pedestrian Access



**GLENCORE** CLERMONT COAL  
Remote Workshop and Aprons



**SBS Heavy Haulage** MACKAY QLD  
6,000m<sup>2</sup> Concrete Hardstand



**MACKELLAR** BLACKWATER QLD  
7,600m<sup>2</sup> Concrete Workshop Pavement



**AURIZON** HEXHAM NSW  
Train Facility Pathways

**Reduce total costs by 76% vs traditional concrete**

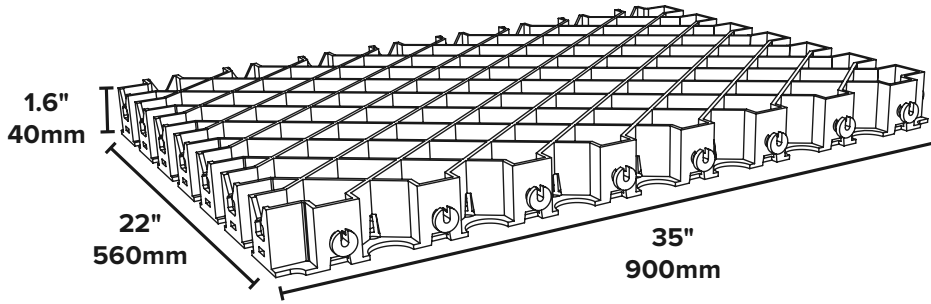
**Fast Install eliminate operational downtime**

**Save up to 90% the cost of a traditional concrete slab**



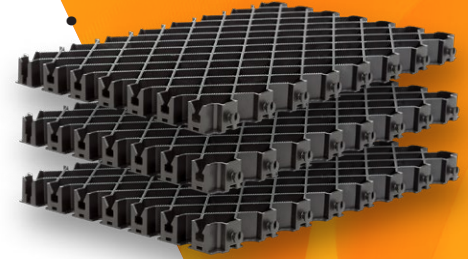
**DIAMOND GRID™**

# Specifications.



<b>Measurements</b>	35" W x 22" L x 1.6" H - 900mm W x 560mm L x 40mm H
<b>Crush resistance (filled with gravel/road base)</b>	650+ tons/sqft filled - 7000+ tonne m2
<b>Crush resistance (empty grid)</b>	30 tons/sqft empty - 300 tonne m2
<b>Weight per grid</b>	7.05 lbs - 3.2kg
<b>Fill ratio</b>	1 cubic yard of fill per 207.9 square feet - 1 cubic metre of fill per 26m2
<b>Permeability</b>	Up to 96%
<b>Fill</b>	Road base, gravel, pebbles, grass, soil, concrete, asphalt

**Mining & Civil's No. 1 Alternative to Traditional Concrete, Asphalt & Bitumen Pavements**




After rigorous research and development and engineering testing performed at world-renowned facilities Diamond Grid™ has now become a global leader with installations across 27 countries.

# Technical Benefits.

Diamond Grid™ VS Comparable Surface Solutions

Surface Consideration:	CONCRETE	CONCRETE SLABS / PAVERS	ASPHALT
Longevity	15-20 years	10-15 years	5-10 years
Materials Required	Cement and steel mesh, framework required	Cement slabs (pre-cast)	Asphalt mixture (tar and aggregate)
Maintenance	<b>Low</b> - prone to cracking and becoming unlevelled	<b>Low</b> - can become cracked and unlevelled	<b>High</b> - Ongoing maintenance, top seal every 2-3 years
Cost & Appearance	Black, uniform, industrial, high cost	Options available at a cost	Uniform, options available at a higher cost
Permeability	N/A	15-30%	N/A
Depth	Varies from 3-11" depending on application	Varies from 4-6" depending on application / loads	Average of 4 - 4.5"
Eco Friendliness	High impact, not recyclable or reusable, high ground runoff, ground suffocated, can generate acid	High impact, not recyclable or reusable, requires waster dump if removed, suffocates ground	High impact if dumped/ removed, uses oil based derivatives, not recyclable or reusable, high ground runoff, ground suffocated



**DIAMOND GRID™**

- 30+ years
- 100% recycled polypropylene
- Very low** - May require some gravel or grass maintenance
- Variety of fills available at low cost to blend into natural environment
- Up to 100%
- Varies from 1-2"
- Low impact, uses recycled materials, can be moved, reused or replaced, up to 100% permeability, low runoff, ground maintains breath-ability



# Diamond Grid™ 15 years working with Mining & Civil

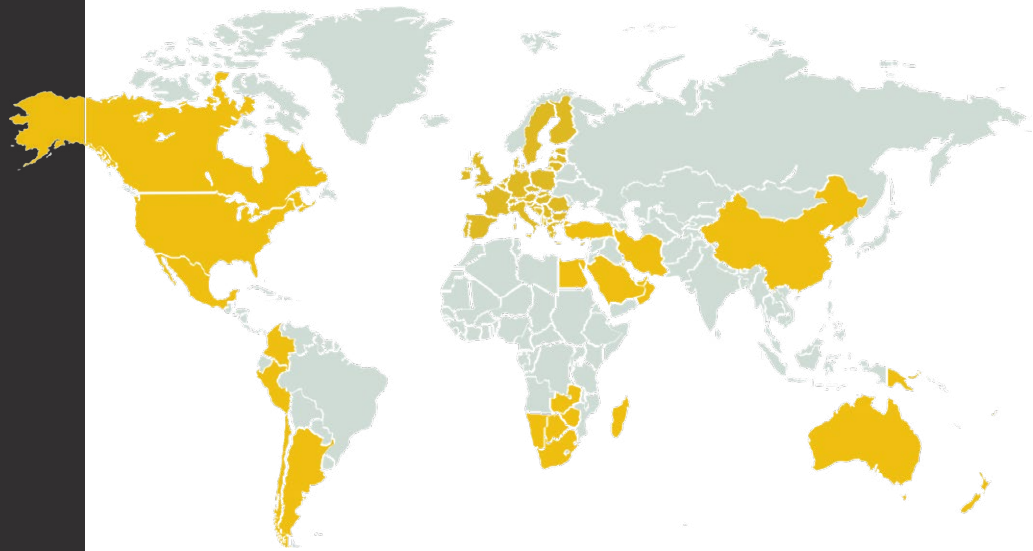
For over a decade, Diamond Grid™ has led globally across 27 countries, offering solutions for Mining & Civil, Agriculture, Rural Areas, Golf Courses, Councils, National Parks and beyond.

## Distributors

Australia	Canada
South Africa	USA
Botswana	Mexico
Namibia	Colombia
Zimbabwe	Peru
Zambia	Chile
Madagascar	Argentina
Kuwait	Papua New Guinea,
United Arab Emirates	Fiji
Turkey	New Zealand
Oman	Egypt
Qatar.	Saudi Arabia

## Manufacturers

Australia	New Zealand
China	Canada
Mexico	United Arab Emirates
USA	Peru
South Africa	



**Our partners across various industries have come to depend on Diamond Grid™ for its proven effectiveness in delivering reliable and efficient solutions.**

From Mining and Civil infrastructure development to paving roads deep in the jungles of Peru and construction projects across the USA, Diamond Grid™ continues to be the go-to choice for industry professionals seeking superior performance and durability.

Through ongoing collaboration and feedback from our partners, Diamond Grid™ remains committed to meeting the evolving needs of the global market driving innovation and expectations through project outcomes.



**Diamond Grid™ Concrete Pavements for a water truck fill point and access roads, Glencore Coal**

# Customer Testimonials.



### Queensland Rail

"The help and after-sales service have been incredible, as some of the companies that we deal with just drop you after they have sold you the product, fortunately, this is not the case with **Diamond Grid™**. I would recommend this product to anyone who has any issues with access roads or unstable areas to fix."



**Rodney Shea**  
Coordinator Civil Assets, Queensland Rail



### Mandalay Resources

"After initially purchasing **Diamond Grid™** to solve a problem with a single muddy pathway, we have since kept diamond grid in our stores to deal with any paths or road way issues that arise. **Diamond Grid™** has become a critical part of all our infrastructure projects."



**Adam Place**  
Sustainability Manager - Mandalay Resources

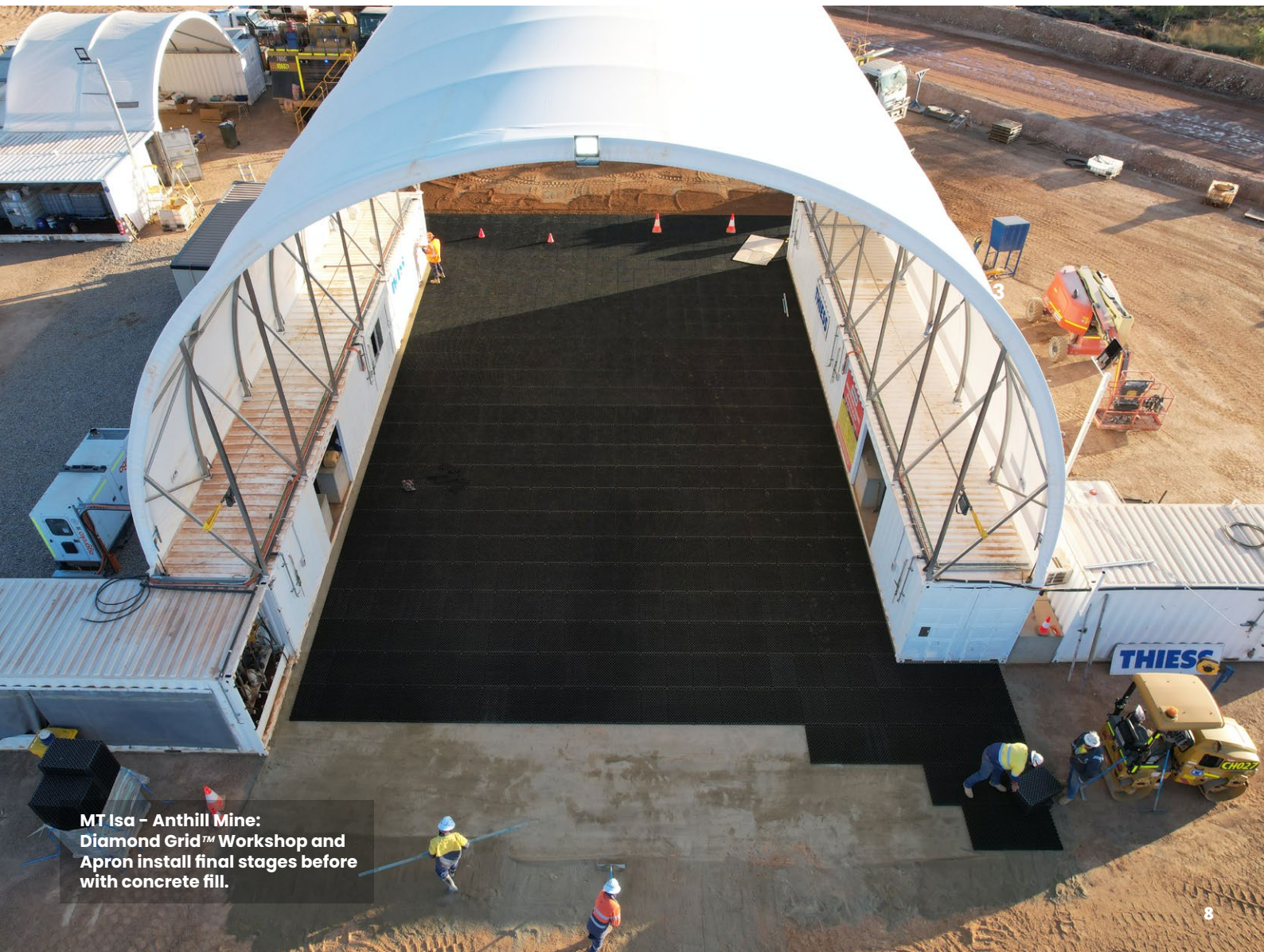


### Thiess

"**Diamond Grid™** has been installed between some of our offices. The finished surface result was excellent and was very easy to install. We will certainly be ordering some more as required."



**Hellen Ballinger**  
Contracts administrator Lake Vermont Coal Project



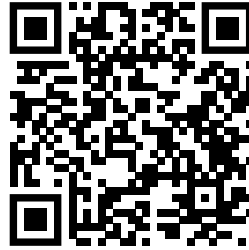
**MT Isa - Anthill Mine:**  
**Diamond Grid™ Workshop and Apron install final stages before with concrete fill.**



# Videos & Case Studies.



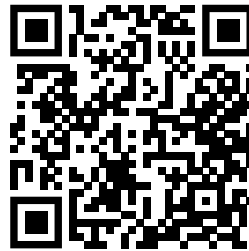
**6000m² Concrete Hardstand**  
Mining Heavy Vehicle Transport & Repair



**Access Road**  
350m Remote Private Road



**Cost Comparison Video**  
Diamond Grid vs Traditional Concrete



**1200m² Concrete Hardstand**  
Warehouse Hard Stand & Loading Area



**Mining & Civil Case Studies**

Hardstands | Haul Roads | Workshops | Camps

## FormDirect™

*Innovative Environmental Solutions*

[formdirect.com.au/environmental](http://formdirect.com.au/environmental)



DIAMOND GRID™